



Shiksha Mandal's  
**Shrikrishnadas Jajoo Grameen Seva Mahavidyalaya,**

Pipri – Wardha - 442001

Affiliated to Rashtrasant Tukdoji Maharaj Nagpur University, Nagpur

Index No.

Sr.College : 659

Jr. College : 07.01.004

Estd. July 15, 1961

**INTERNAL QUALITY ASSURENCE CELL**

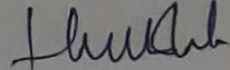
**Criteria No. VII**

*Green campus initiatives*

Total area of the college main campus is 12 acres, of which approximately 25 percent is covered by herbs, shrubs and trees. In total, based on our data collected, there are 1372 plants in the college campus. In this, 35 are trees, 127 and rests are plants of average length and small plants. Each year various departments and committees such as NSS and others, organizes plantation programmes to increase the green area. A scheme of adoption of plant, keep monitoring and water when required is done by students and supervision by mentors.

A scheme of making a provision of drinking water for birds in the scorching heat of summer by the students. Teams of students are prepared under the supervision of faculty and allotted certain watering pots to refill and clean it regularly. It creates environmental consciousness among students and bonding with nature.

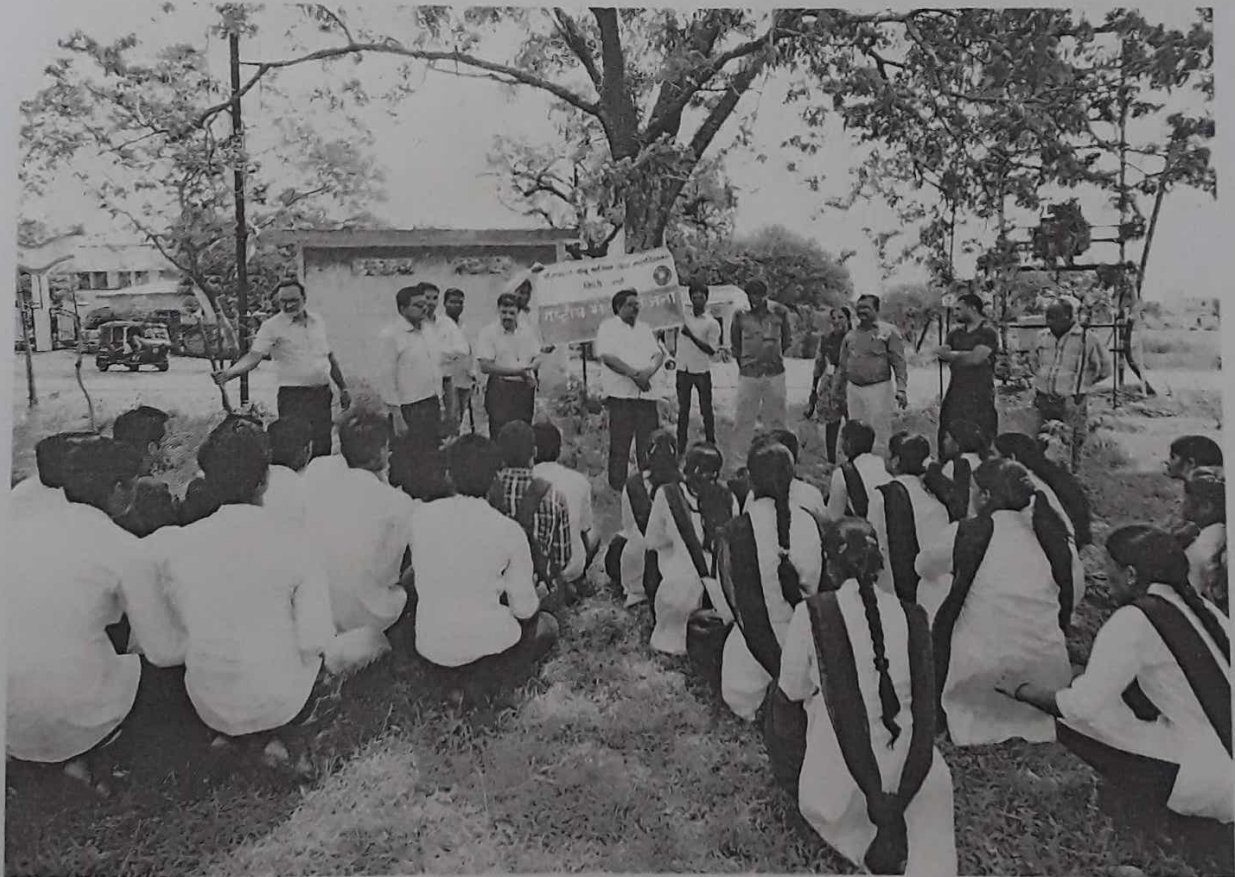


  
**PRINCIPAL**  
Shrikrishnadas Jajoo  
Grameen Seva Mahavidyalaya  
PIPRI (WARDHA)

*Plantation and Awareness programmes*



*Shrikishnadas Jajoo*  
PRINCIPAL  
Shrikishnadas Jajoo  
Grameen Seva Mahavidyalaya  
PIPBI (WARDHA)



*Shrikrishnadas Jajoo*  
**PRINCIPAL**  
Shrikrishnadas Jajoo  
Grameen Seva Mahavidyalaya  
PIPRI (WARDHA)

*Drinking water Pots for birds*

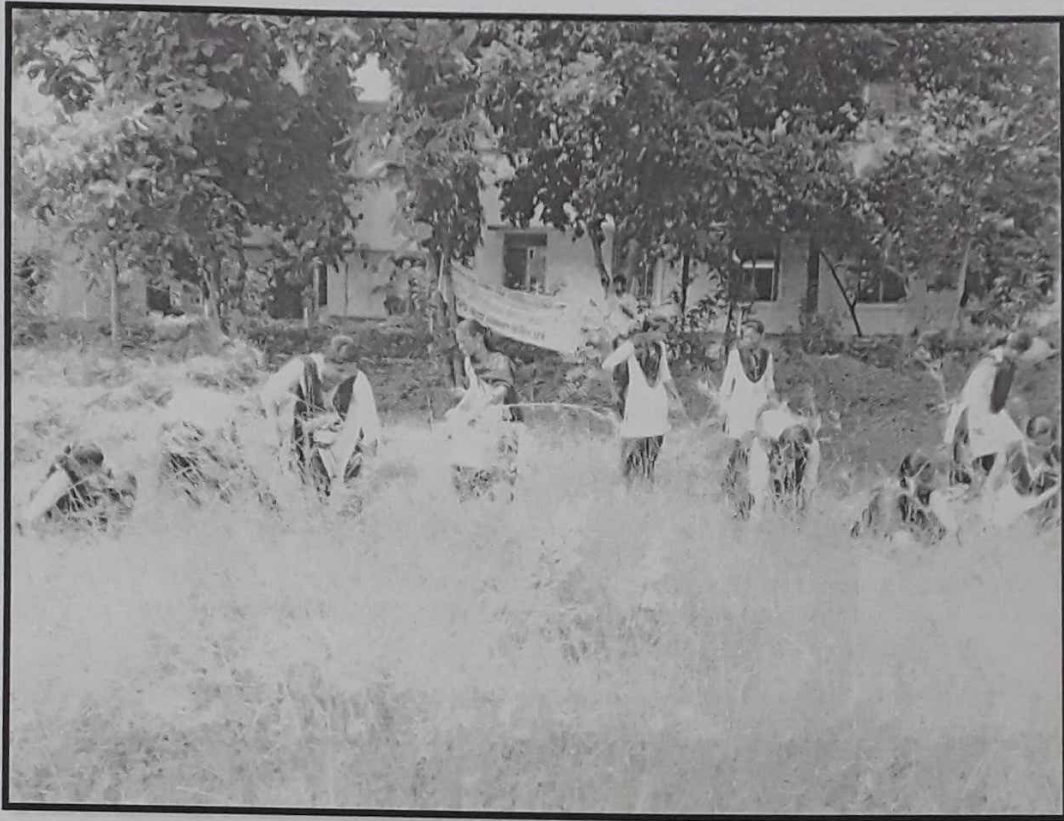


*J. J. J.*  
PRINCIPAL  
Shrikrishnadas Jajoo  
Grameen Seva Mahavidyalaya  
PIPRI (WARDHA)

*Clean Campus initiatives*



*[Handwritten Signature]*  
PRINCIPAL  
Shrikrishnadas Jajoo  
Grameen Seva Mahavidyalaya  
PIPRI (WARDHA)



*Shrikrishnadas Jajoo*  
PRINCIPAL  
Shrikrishnadas Jajoo  
Grameen Seva Mahavidyalaya  
PIPRI (WARDHA)



*Shrikrishnadas Jajoo*  
**PRINCIPAL**  
Shrikrishnadas Jajoo  
Gramseva Mahavidyalaya  
PIPRI (WARDHA)



*Shrikrishnadas Jajoo*  
**PRINCIPAL**  
Shrikrishnadas Jajoo  
Grameen Seva Mahavidyalaya  
PIPRI (WARDHA)





Shiksha Mandal's  
**Shrikrishnadas Jajoo Grameen Seva Mahavidyalaya,**

Pipri – Wardha - 442001

Affiliated to RashtrasantTukdojiMaharaj Nagpur University, Nagpur

Index No.

Sr.College : 659

Jr. College : 07.01.004

Estd. July 15, 1961

---

## INTERNAL QUALITY ASSURENCE CELL

### Criteria No. VII

#### *Green campus initiatives*

Total area of the college main campus is 12 acres, of which approximately 25 percent is covered by herbs, shrubs and trees. In total, based on our data collected, there are 1372 plants in the college campus. In this, 35 are trees, 127 and rests are plants of average length and small plants. Each year various departments and committees such as NSS and others, organizes plantation programmes to increase the green area. A scheme of adoption of plant, keep monitoring and water when required is done by students and supervision by mentors.

A scheme of making a provision of drinking water for birds in the scorching heat of summer by the students. Teams of students are prepared under the supervision of faculty and allotted certain watering pots to refill and clean it regularly. It creates environmental consciousness among students and bonding with nature.

*Plantation and Awareness programmes*





*Drinking water Pots for birds*



*Clean Campus initiatives*







