

ShrikrishnadasJajoo Grameen Seva Mahavidyalaya,  
Pipri - Wardha

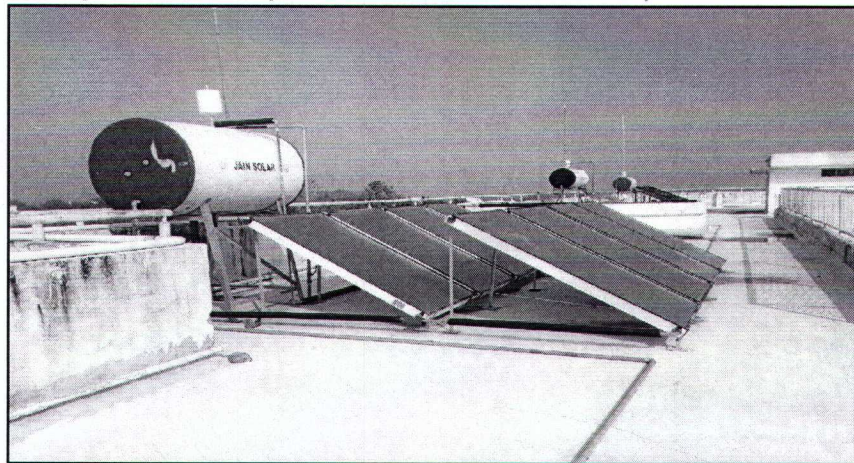
Criterion VII

Environmental Consciousness and Sustainability

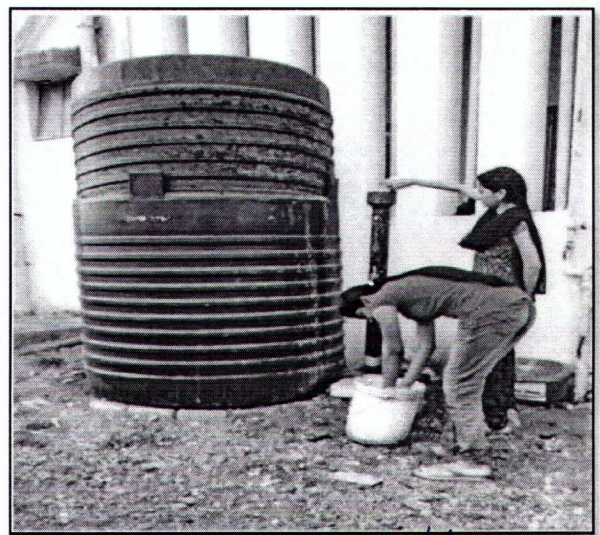
Key Indicator 7.1.2

Environmental Consciousness and Sustainability/Alternate Energy initiatives such as:  
Percentage of power requirement of the College met by the renewable energy sources

1. In Our College premise approximately 20 % of total power consumption, is used by power saving LED lights, LED Tube lights and Solar lights etc.
  2. In Our girls' hostel 100 numbers of LED Tube lights, LED Lights and Solar lights used.
  3. In Our girls' hostel 2000 Litres of Solar Water Geyser unit is in working
1. Solar Water Geyser 2000 litre (1000 litre +500 litre +500 litre)



2. Bio-Gas Plant( Girls Hostel Mess)

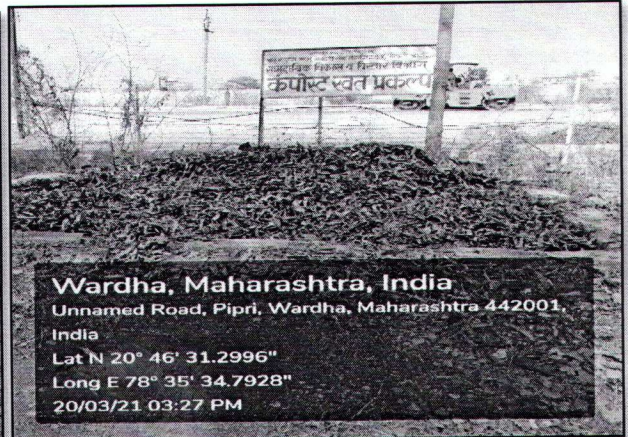


*Shukla*

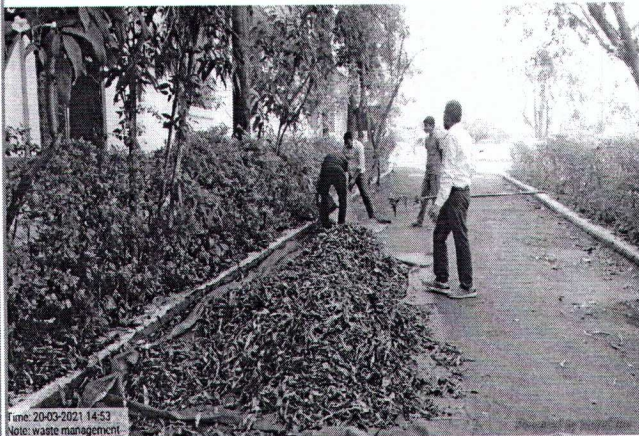
**PRINCIPAL**

**Shrikrishnadas Jajoo  
Grameen Seva Mahavidyalaya  
PIPRI (WARDHA)**

### 3. Compost Pit



**Wardha, Maharashtra, India**  
Unnamed Road, Pipri, Wardha, Maharashtra 442001,  
India  
Lat N 20° 46' 31.2996"  
Long E 78° 35' 34.7928"  
20/03/21 03:27 PM



Time: 20-03-2021 14:53  
Note: waste management



*Shukit*  
**PRINCIPAL**  
Shrikrishnadas Jajoo  
Grameen Seva Mahavidyalaya  
PIPRI (WARDHA)  
Page 2 of 4

4. Solar Street / Outdoor Lights( Girls Hostel)



*Hubit*  
PRINCIPAL  
Shrikrishnadas Jajoo  
Grameen Seva Mahavidyalaya  
PIPBI (WARDHA)