

Shiksha Mandal's

**Shrikrishnadas Jajoo Grameen Seva Mahavidyalaya,
Pipri – Wardha - 442001**

Affiliated to Rashtrasant Tukdoji Maharaj Nagpur University, Nagpur

Index No.

Sr.College : 659

Jr. College : 07.01.004



Estd. July 15, 1961

INTERNAL QUALITY ASSURENCE CELL

Criteria No. IV

4.1.1 Availability of adequate infrastructure and physical facilities viz., classrooms, laboratories, ICT facilities, cultural activities, gymnasium, yoga centre etc. in the institution

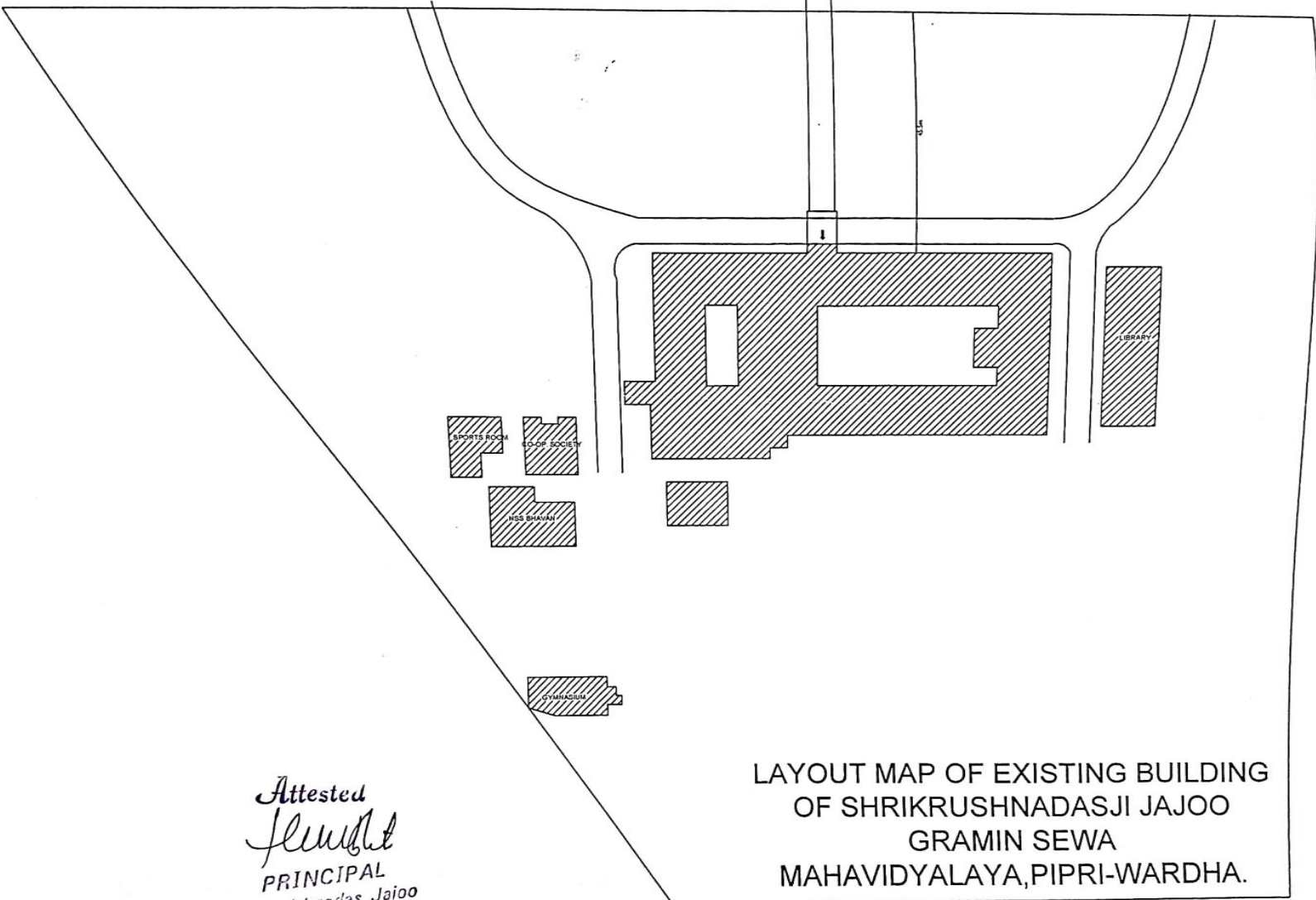
Maps



SATELLITE VIEW OF SJGSM , PIPRI- WARDHA

Attested
Shubh
PRINCIPAL
Shrikrishnadas Jajoo
Grameen Sev. Mahavidyalaya
PIPRI (WARDHA)

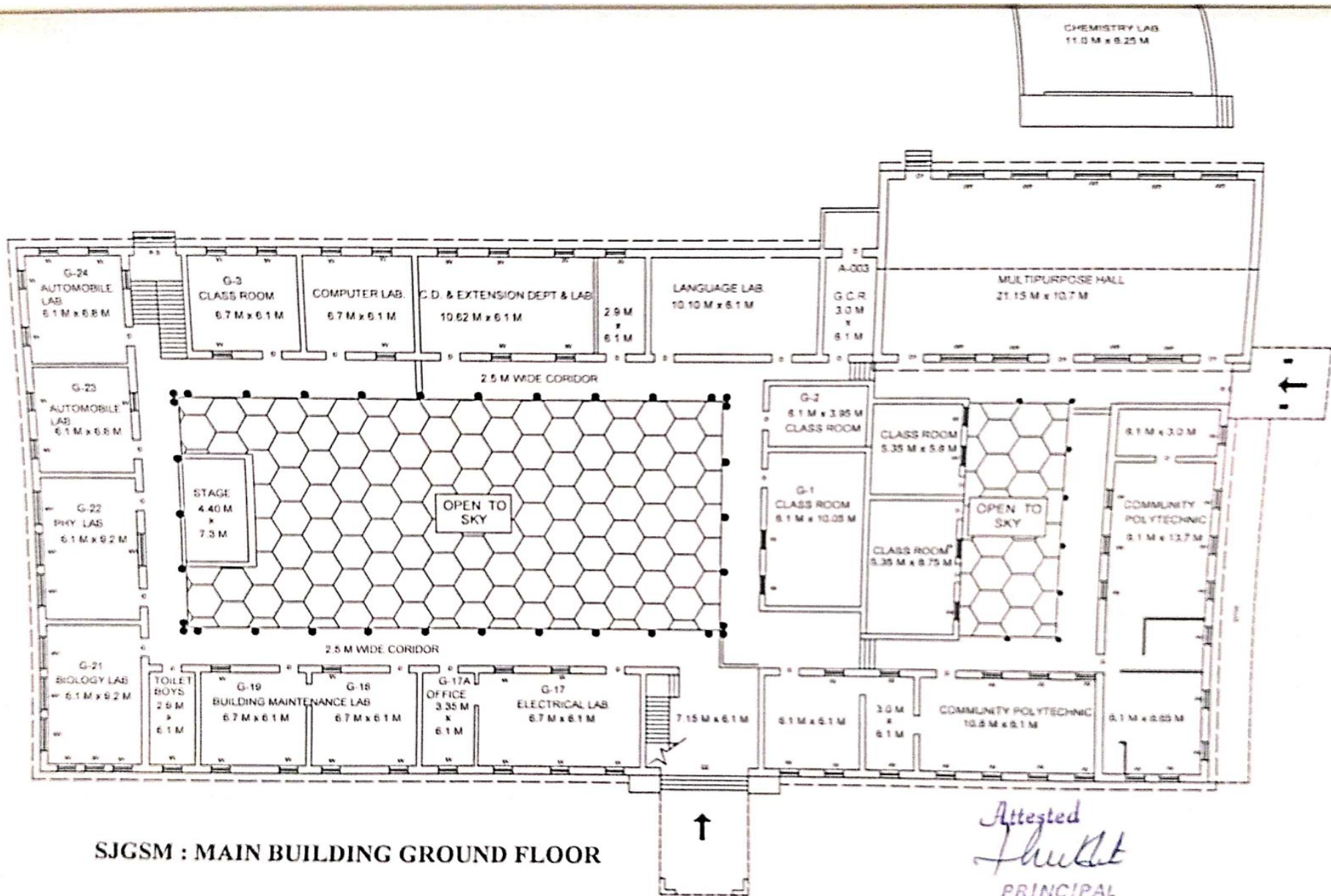
30 M ROAD (WARDHA - ARVI)



Attested
[Signature]
PRINCIPAL
Shrikrishnadas Jajoo
Grameen Seva Mahavidyalaya
PIPRI (WARDHA)

LAYOUT MAP OF EXISTING BUILDING
OF SHRIKRUSHNADASJI JAJOO
GRAMIN SEWA
MAHAVIDYALAYA, PIPRI-WARDHA.

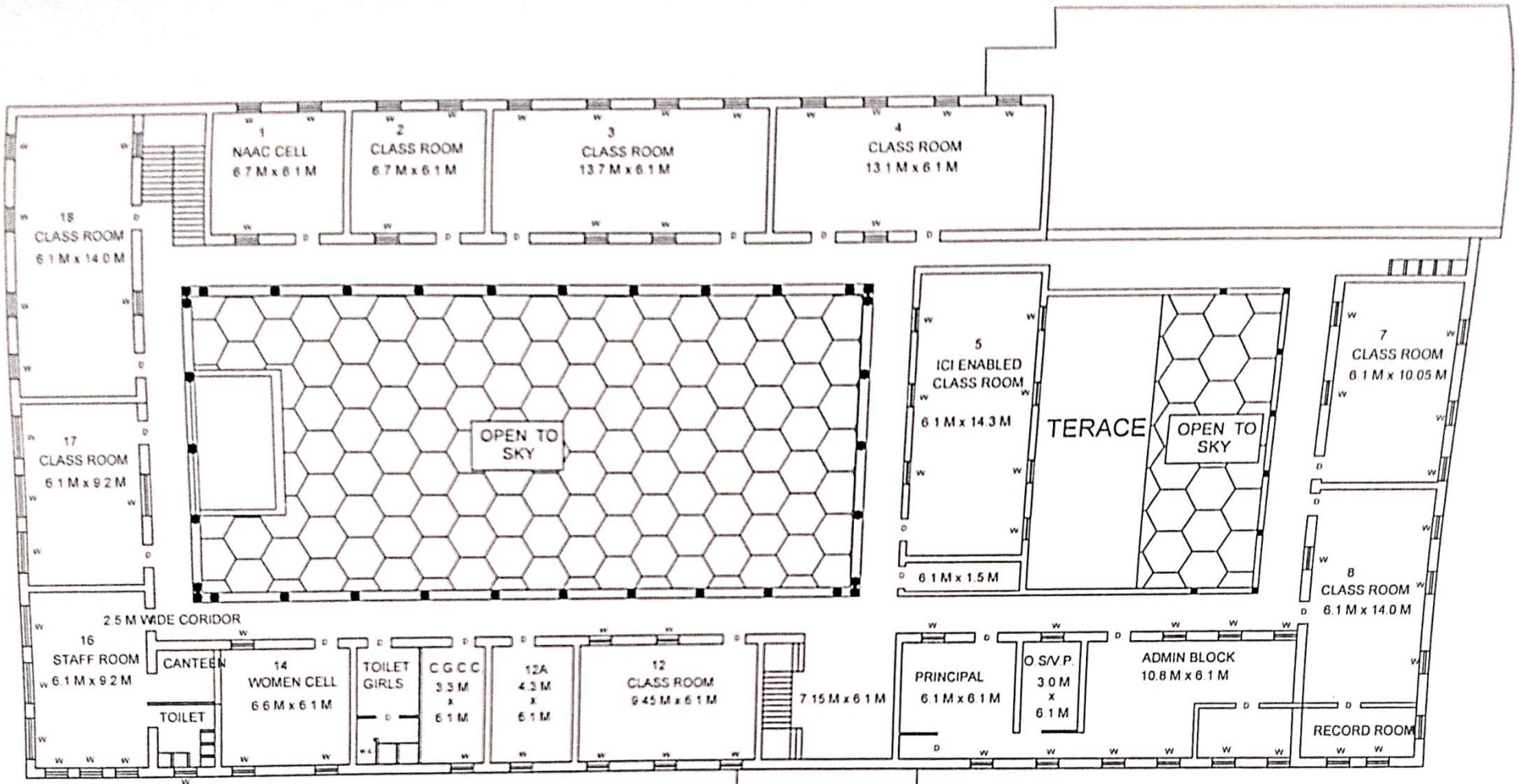
ANNEXURE - 10



SJGSM : MAIN BUILDING GROUND FLOOR

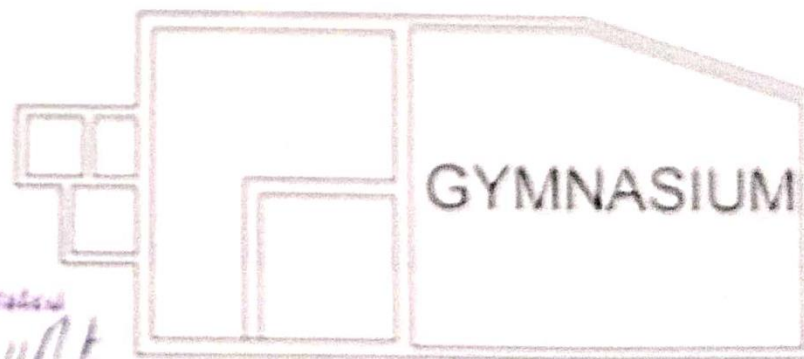
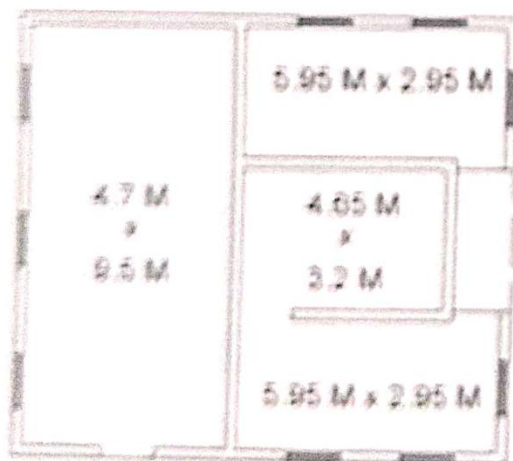
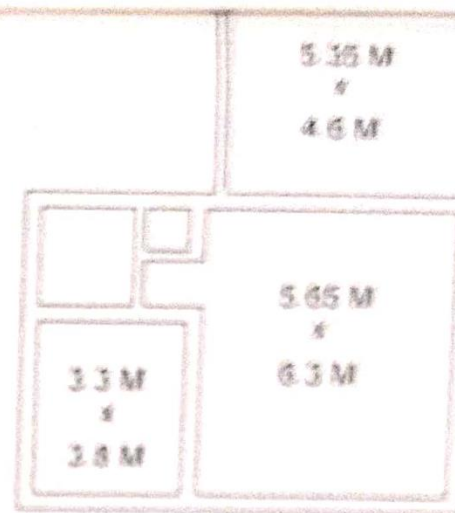
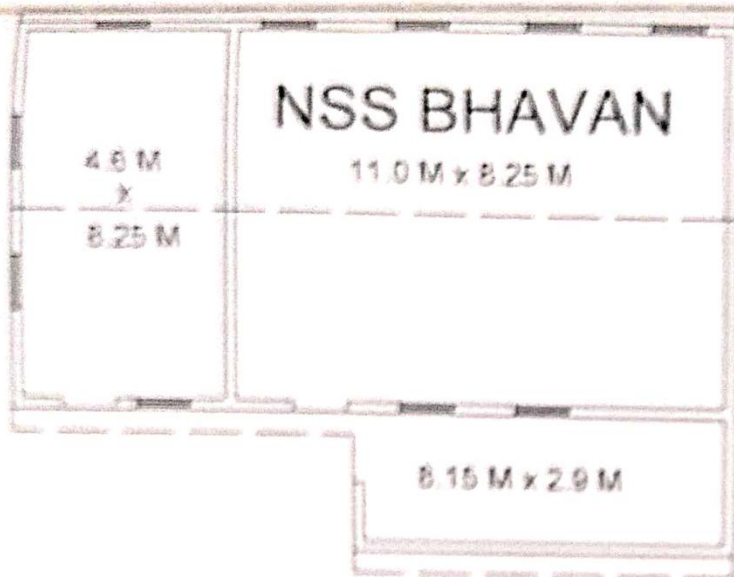
Attested
Shubh
 PRINCIPAL
 Shrinivasdas Jajoo
 Gramen Sava Mahavidyalaya

212



SJGSM : MAIN BUILDING FIRST FLOOR

Attested
Shrikrishnadas Jajoo
PRINCIPAL
Gramen Sev- Mahavidyalaya
PIPRI (WARDHA)



Attested
Shubh

PRINCIPAL

38/11/2022

Principal

Principal

CO-OPERATIVE SOCIETY